



## 1 Sir Harrys Road Birmingham, B5 7QH

Available for the 2026–2027 Academic Year  
£79.8 per person, per week

Modern 5-bedroom student house finished to a high standard. Fully furnished with large living and dining areas, 1 shower room and 2 toilets, and a fully fitted kitchen with all appliances, including a washer and dryer. Benefits include central heating, double glazing, aerial points in all bedrooms, front and rear gardens, and ample on-street parking.

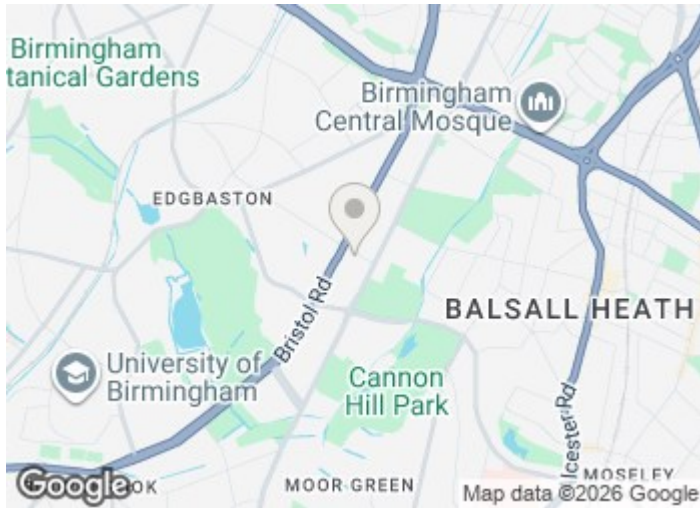
Ideally located within easy walking distance of the University, Dental School, City Centre, Harborne, QE Hospital, and Selly Oak.

EPC Rating: E  
Council Tax Band: C

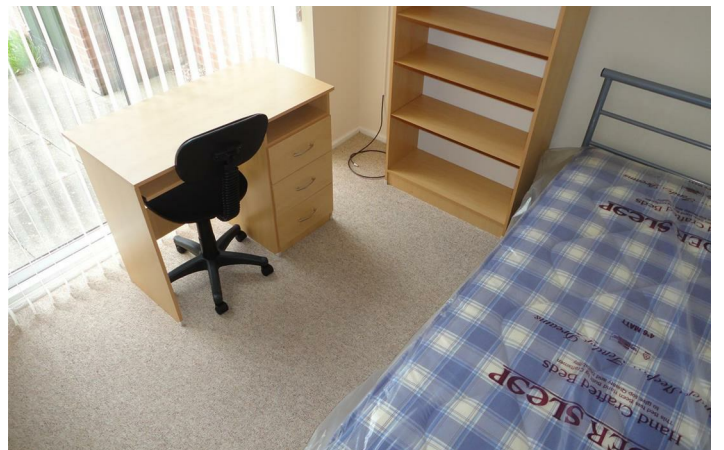
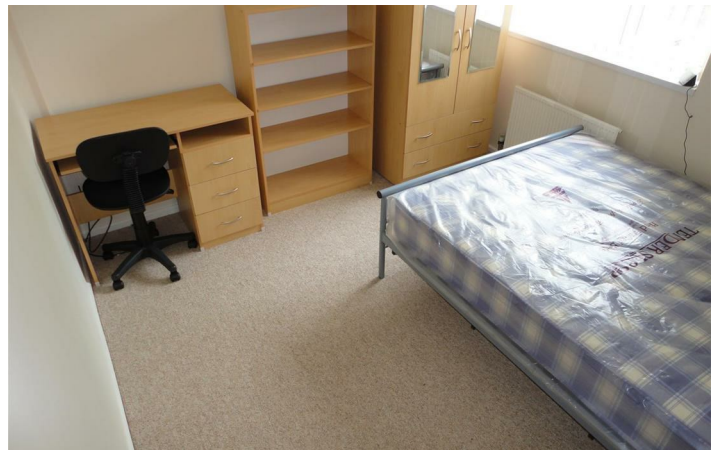
**£1,729 Per Month**

# 1 Sir Harrys Road

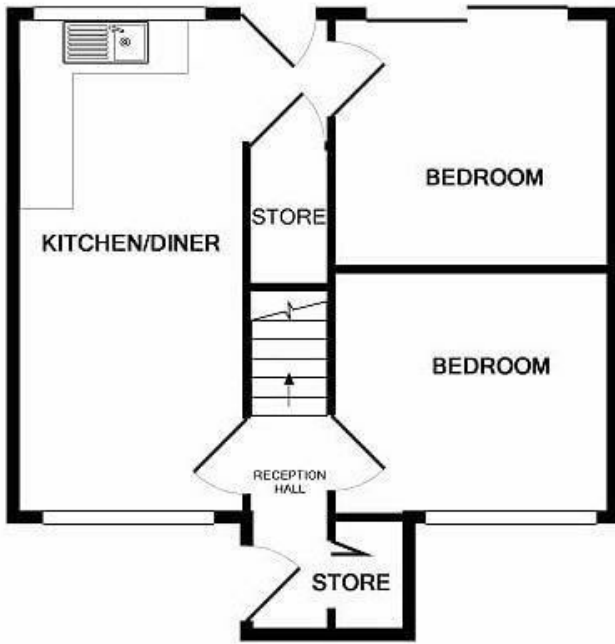
Birmingham, B5 7QH



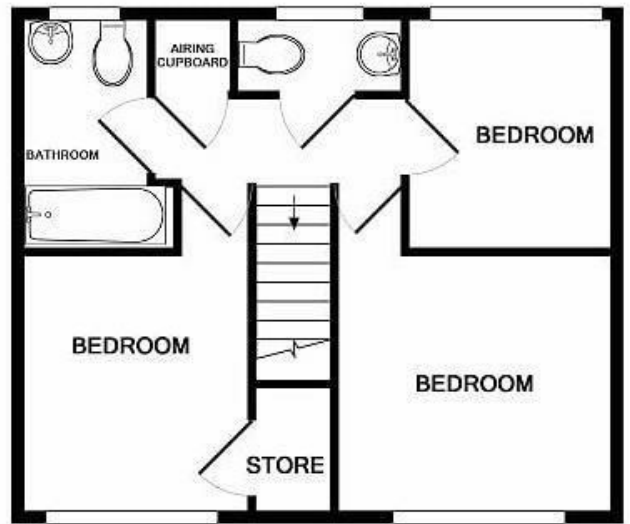
[Directions](#)



# Floor Plan



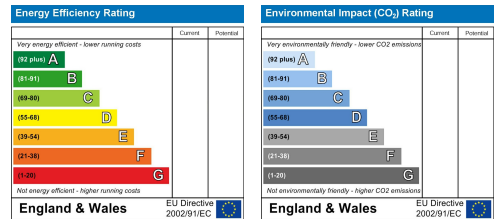
GROUND FLOOR  
APPROX. FLOOR  
AREA 445 SQ.FT.  
(41.3 SQ.M.)



1ST FLOOR  
APPROX. FLOOR  
AREA 417 SQ.FT.  
(38.8 SQ.M.)

SIR HARRYS RD, B5 7QH  
TOTAL APPROX. FLOOR AREA 862 SQ.FT. (80.1 SQ.M.)  
Measurements are approximate. Not to scale. Illustrative purposes only  
Made with Metropix ©2019

These particulars, whilst believed to be accurate are set out as a general outline only for guidance and do not constitute any part of an offer or contract. Intending purchasers should not rely on them as statements of representation of fact, but must satisfy themselves by inspection or otherwise as to their accuracy. No person in this firm's employment has the authority to make or give any representation or warranty in respect of the property.



543 Bristol Road, Selly Oak, Birmingham B29 6AU. T: 0121 472 3331 Website: [www.direct-housing.co.uk](http://www.direct-housing.co.uk)  
E-mail: [sellyoak@direct-housing.co.uk](mailto:sellyoak@direct-housing.co.uk) [lettings@direct-housing.co.uk](mailto:lettings@direct-housing.co.uk) [accounts@direct-housing.co.uk](mailto:accounts@direct-housing.co.uk)

